

Name: _____

Date: _____

Science - Universe Worksheet - 1

Match the corresponding text with the correct picture and write its name on the line.

Telescope Star Earth Sun Moon Comet Spaceship/Spacecraft Satellite Constellation

It is the only natural satellite of the earth and the fifth largest moon in the Solar System.



It is a massive, luminous sphere of plasma held together by its own gravity



It is the star at the center of the Solar System. It is almost perfectly spherical and consist of hot plasma



It is an icy body, when passing close to the Sun, displays a visible amosphere or coma and sometimes also a tail.



It is a group of stars that make an imaginary shape in the night sky.



It is usually a tubular optical instrument for viewing distant objects by means of the refraction of light rays trough a len.



It is the third planet from the Sun. It is referred to as the world or the Blue Planet



It is an object which has been intencionally placed into orbit.



It is a vehicule or machine designed to fly in outer space to explore.





Name: _____

Date: _____

Science - Universe Worksheet - 2

1. How many galaxies are there in the universe? _____

Match the type of galaxy with its shape.

- | | |
|---------------------------|---|
| Type of Galaxy | Description of Shape |
| ____ 2. Spiral galaxy | a. Bulge in middle and arms that spiral outward |
| ____ 3. Elliptical galaxy | b. Does not have a regular shape |
| ____ 4. Irregular galaxy | c. Looks like round or flattened ball |

5. A young galaxy with a giant black hole at the center is a(n) _____.

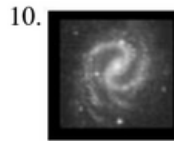
6. The galaxy in which our solar system is located is called the _____.

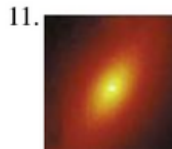
7. What type of galaxy is the Milky Way? _____

8. Suppose astronomers discover a galaxy that contains only old stars. What type of galaxy is it likely to be?

Classify each galaxy.

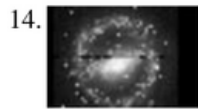




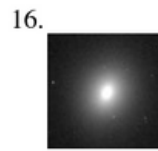












Complete the chart.

	Shape	Age of Stars	Size	Number of Galaxies
Spiral	17)	18)	19)	20)
Elliptical	21)	22)	23)	24)